

Figure 3: (Normal Control): Liver of an experimental rat from the control group showing normal morphology as demonstrated by the hepatocytes presenting with intact nuclei (white arrows) surrounded by intact cytoplasmic components. The hepatocytes are interspersed by hepatic sinusoids (black arrows) which are linked to the central vein. H&E **A**: X100 **B**: X400

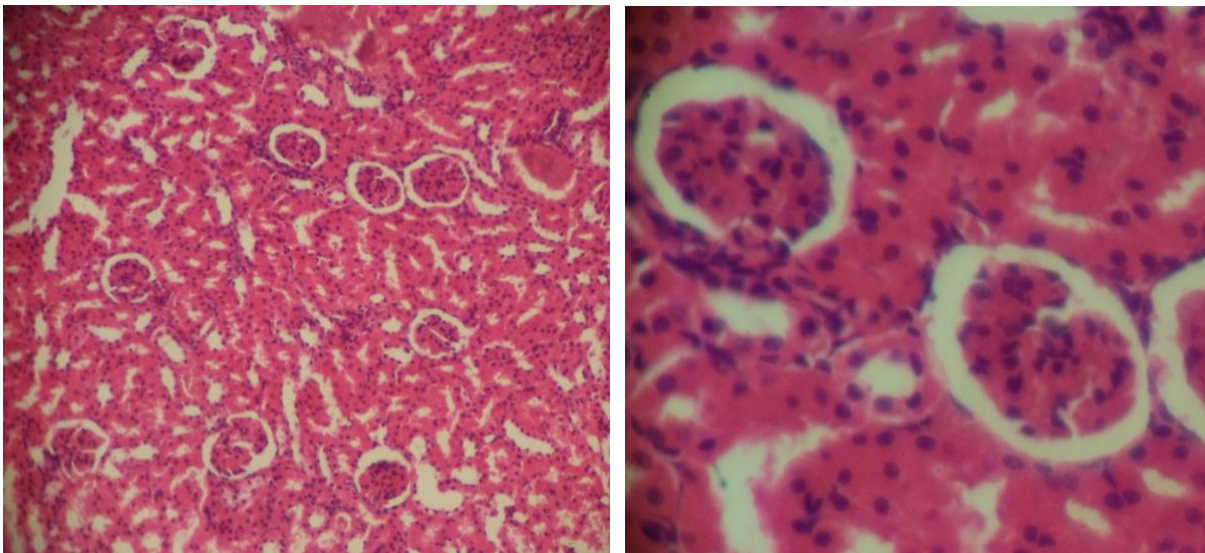


Figure 4: (Normal Control): Kidney of an experimental rat from the control group showing normal morphology as demonstrated by the presence of glomeruli (white stars), which are surrounded by clear zones of capsular spaces (black arrowheads). The glomerular capsules (black arrows) are intact. White arrows= Kidney tubules. H&E **A**: X100 **B**: X400

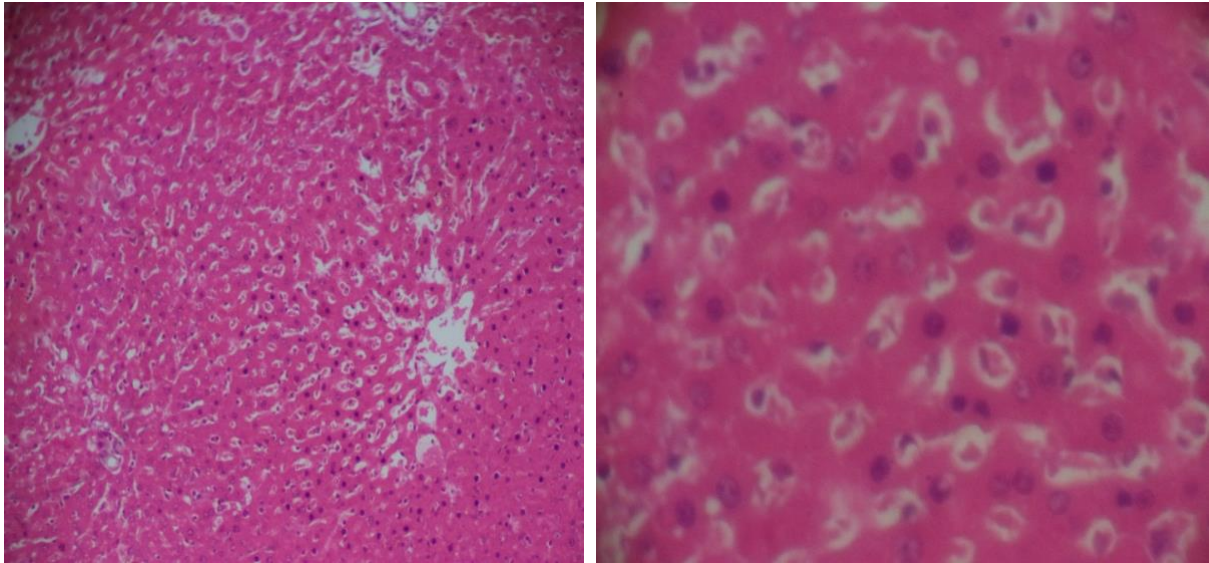


Figure 5: (**2000mg/kg Aqueous Extract of *Ziziphus spina christi*** fruit): Liver of an experimental rat treated with 2000mg/kg Aqueous extract of *Ziziphus spina-christi* fruit for 14 days, showing tissue degeneration (necrosis) as presented by the presence of perinuclear vacuolation thereby presenting the nuclei as naked nuclei (white arrows). Few inflammatory cells (black arrows) are present within the tissue. Black Stars= central vein. H&E A: X100 B: X400

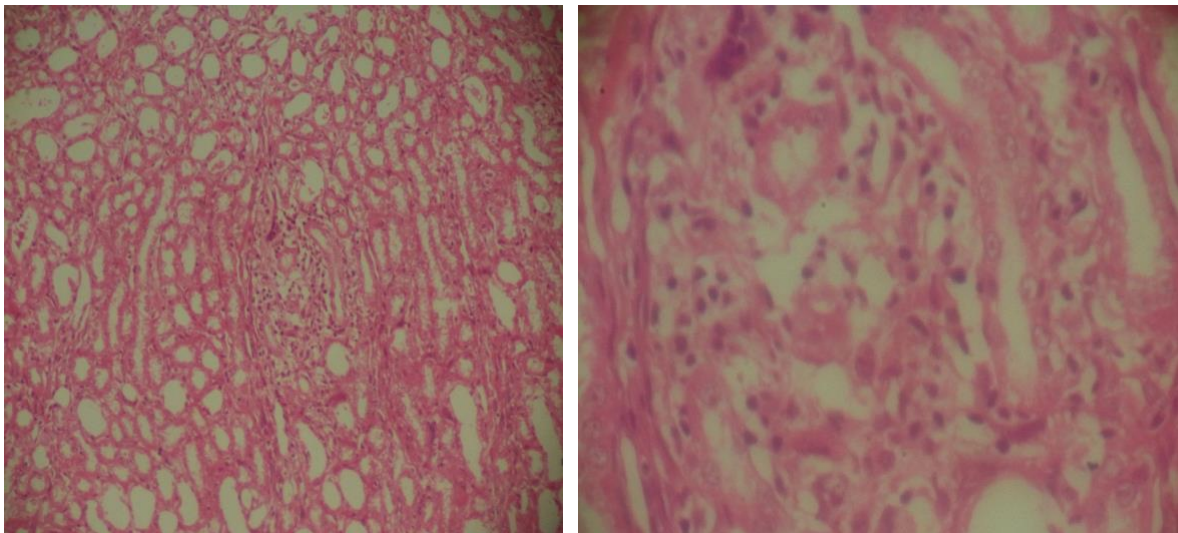


Figure 6: (**2000mg/kg Aqueous Extract of *Ziziphus spina christi*** fruit): Kidney of experimental rat treated with 2000mg/kg aqueous extract of *Ziziphus spina-christi* fruit for 14 days, showing glomerular atrophy and generalized tissue degeneration as seen by the dissolution of both nuclear and cytoplasmic components. Due to the degeneration, the nuclei

are presented as naked nuclei (Black arrows). The kidney presents with inflammation as demonstrated by the presence of inflammatory cells (white arrows) within the tissue. There is collagenation as seen by the increase in the deposition of collagen (white stars) within the tissue some of which extend into the kidney tubules. H&E **A**: X100 **B**: X400

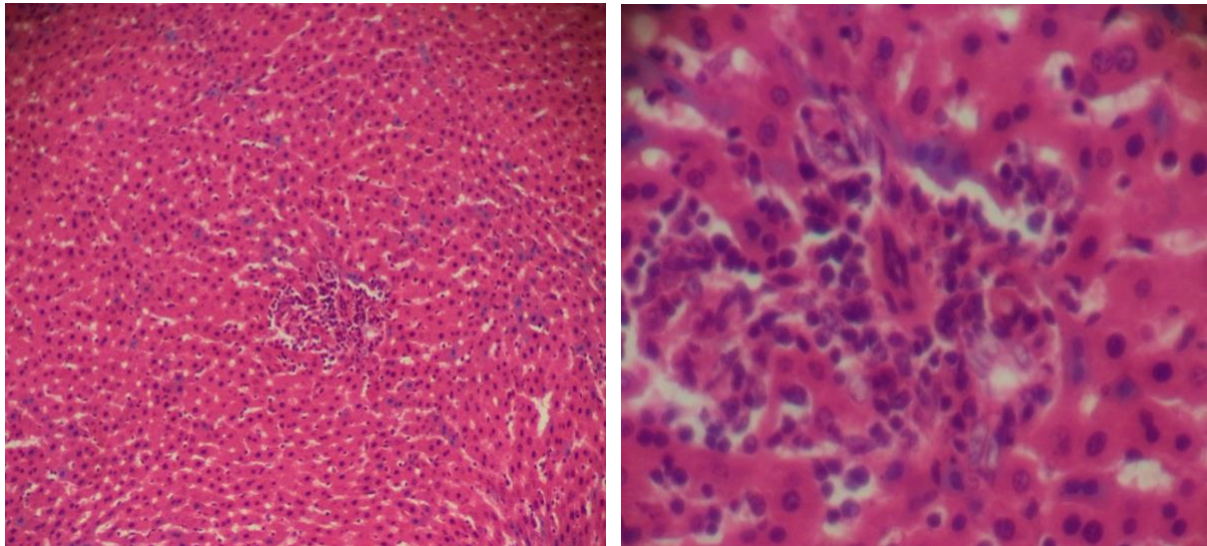


Figure 7: (2000mg/kg Ethanol extract of *Ziziphus spina christi* fruit): Liver of an experimental rat treated with 2000mg/kg ethanol extracts of *Zizipus spina-christi* fruit for 14 days, showing inflammation as evident by the presence of inflammatory cells (white arrows) within the tissue. The cell nuclei (white arrowheads) are moderately pyknotic. There is mild reduction in the sinusoidal spaces (black arrows) H&E **A**: X100 **B**: X400.

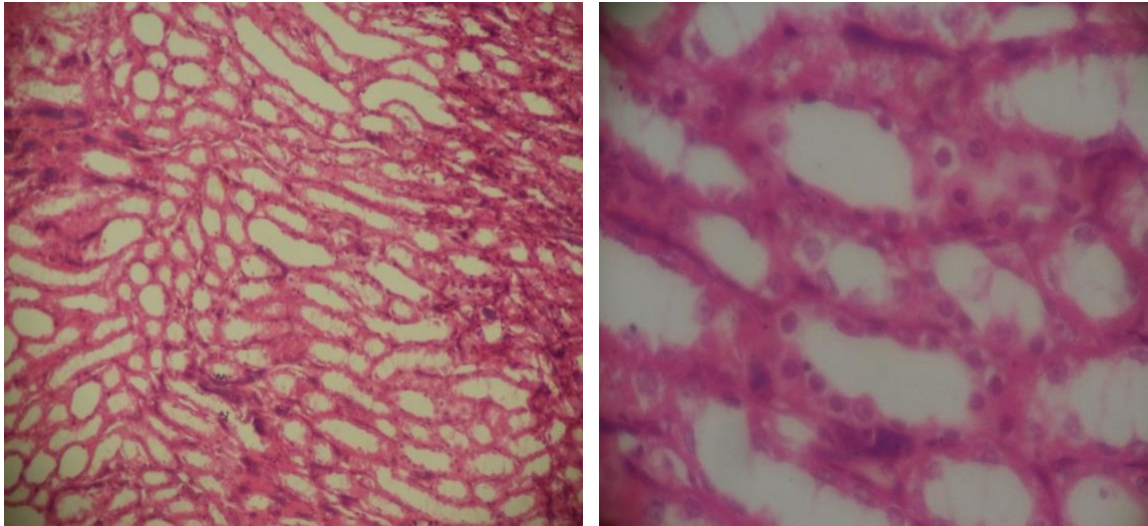


Figure 8: (2000mg/kg Ethanol extract of *Ziziphus spina christi* fruit): Kidney of an experimental rat treated with 2000mg/kg ethanol extracts of *Zizipus spina-christi* fruit for 14 days, showing generalized tissue degeneration (necrosis) as demonstrated by the presence of naked nuclei (black arrows) and the complete loss of nuclei. Tissue atrophy is shown by the increase in tubular spaces (black arrows). Mild collagenation is shown by the presence of collagen fibers (white arrows). H&E **A**: X100 **B**: X400

© 2024 Umar Kura A. et al.